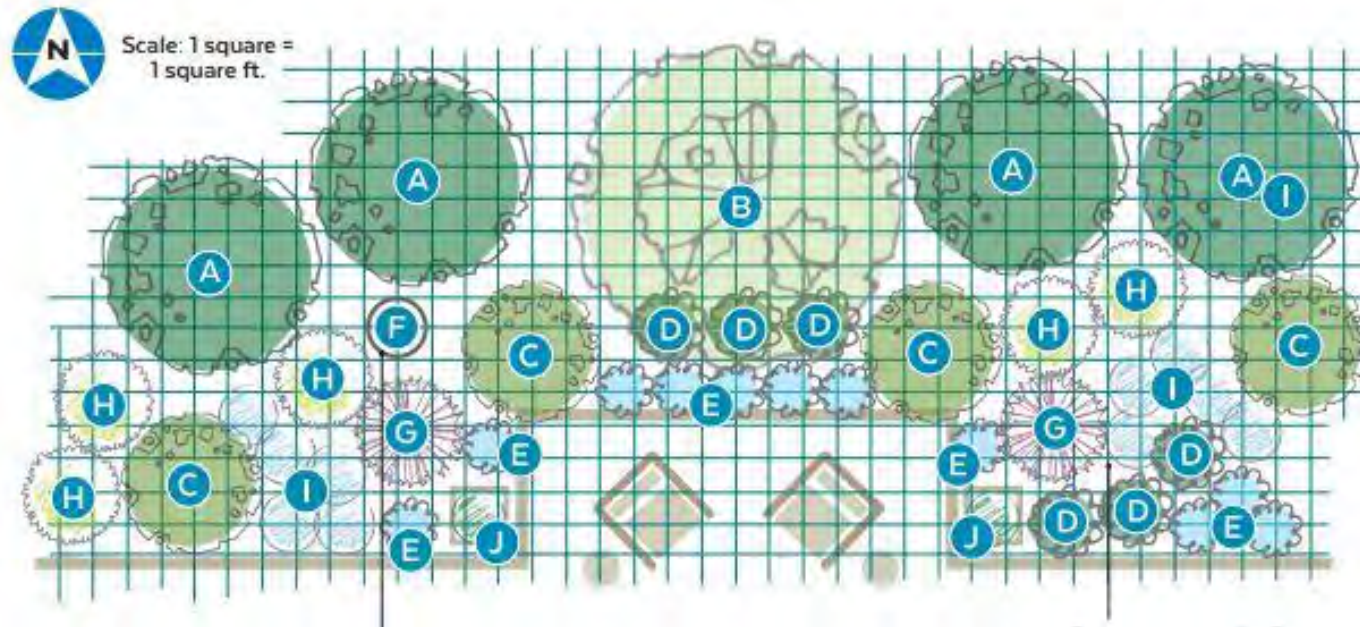


CREATING A BACKYARD (or front yard) OASIS WITH BEAUTIFUL, LOW MAINTENANCE, FLOWERING SHRUBS



PW
PROVEN
WINNERS®

COLOR CHOICE®
FLOWERING SHRUBS

NATALIE CARMOLLI

Marketing/Public Relations

natalie@springmeadownursery.com

ProvenWinners-Shrubs.com



What's a liner, anyway?





PW
PROVEN
WINNERS®

COLOR CHOICE™
FLOWERING SHRUBS



PW
PROVEN
WINNERS®

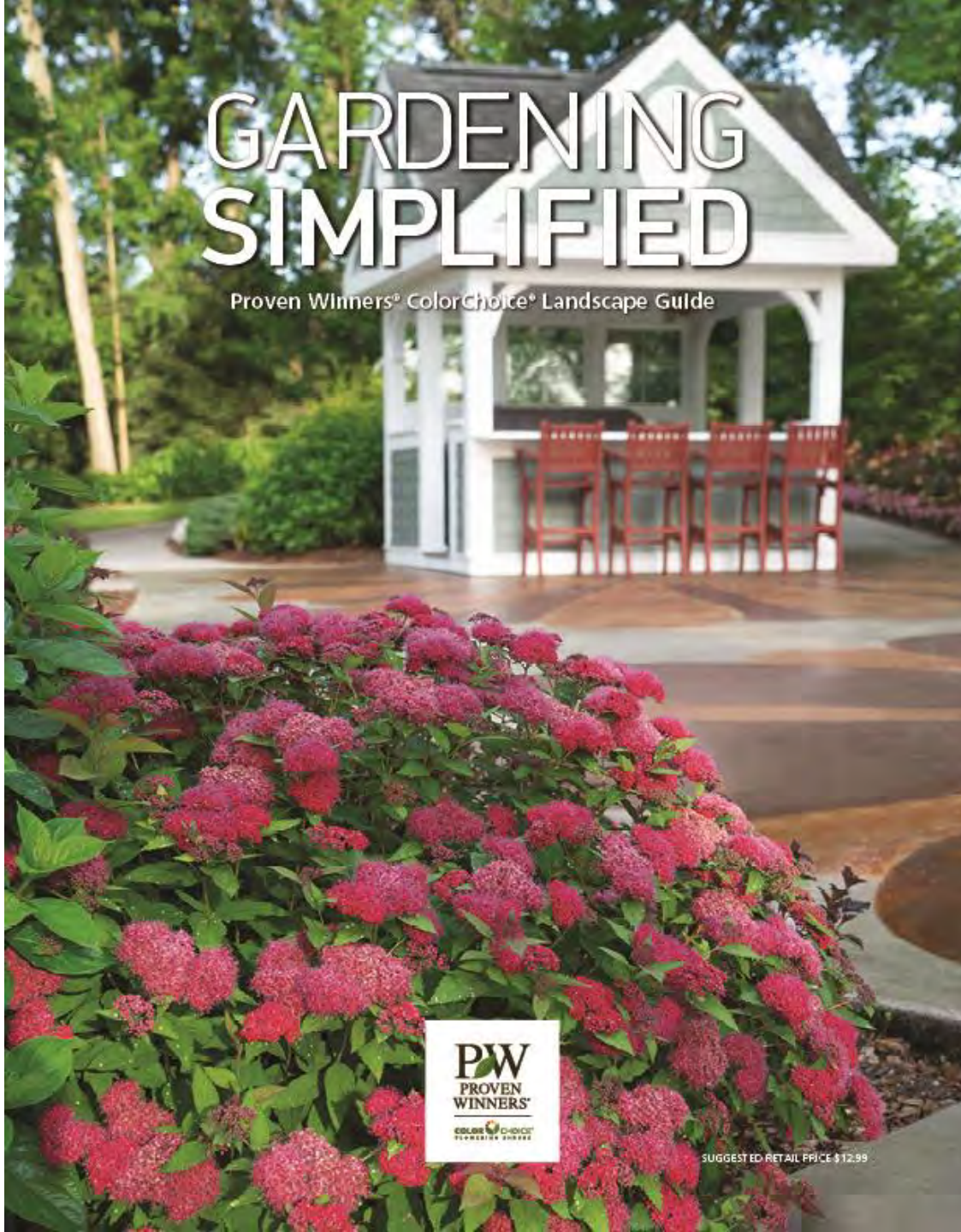
COLOR CHOICE
FLOWERING SHRUBS

PW
PROVEN
WINNERS®

COLOR CHOICE®
FLOWERING SHRUBS

GARDENING SIMPLIFIED

Proven Winners® ColorChoice® Landscape Guide



PW
PROVEN
WINNERS®
COLOR CHOICE®
FLOWERING SHRUBS

SUGGESTED RETAIL PRICE \$12.99

- Specimen Plants
- Border Plants
- Hedging Plants
- Low Hedge and Edging
- Climbers
- Containers
- Fragrance
- Groundcover



Think of your landscape needs:

- Deer resistant
- Low maintenance/non-invasive
- Pollinator garden
- Reblooming, seasonal interest
- Sun/shade
- USDA zone 6b (-5 to 0 F/-20.6 to -17.8 C)

<https://planthardiness.ars.usda.gov>



Make a list



Botanical Name	Common Name	PLANT NAME (Cultivar)	Use	Zone	Light Req.	Pollinator?	Reblooming?	Deer resistant	Size	Flower	Season in flower	Notes
<i>Caryopteris</i>	Bluebeard	Beyond Midnight®	Border/Foundation	5	Full sun	Y		Y	2-2.5'	Blue	Late-summer	
<i>Clematis</i>	Clematis	Madame Maria®	Climber	4	Full-part sun		Y		5-7'	Green/white	Mid-late summer	
<i>Buxus</i>	Boxwood	North Star®	Container	5	Sun/Shade			Y	2-2.5'	None	N/A	Evergreen, blight resistant
<i>Hydrangea serrata</i>	Mountain hydrangea	Tiny Tuff Stuff™	Container	5	Full-part sun	Y	Y		1.5-2'	Pink/blue	Summer	Early bloom
<i>Buddleia</i>	Butterfly Bush	Pugster Amethyst®	Edging	5	Full sun	Y	Y	Y	2'	Purple	Summer	Very large flowers
<i>Spiraea</i>	Spirea	Double Play Doozie®	Foundation	3	Full-part sun	Y	Y	Y	2-3'	Red	Spring-Summer	Sterile, colorful fall foliage
<i>Weigela</i>	Weigela	My Monet®	Foundation	4	Part sun	Y		Y	1.5-2.5'	Pink/purple	Spring-summer	Colorful foliage
<i>Itea</i>	Sweetspire	Scentlandia®	Fragrance	5	Sun-shade	Y		Y	2-3'	White	Summer	
<i>Viburnum plicatum</i>	Doublefile Viburnum	Wabi Sabi®	Groundcover	5	Full-part sun	Y		Y	2-3'	White	Spring	Fall fruit
<i>Sambucus nigra</i>	Elderberry	Laced Up®	Hedging	4	Full-part sun			Y	6-8'	Pink	Summer	Dark foliage
<i>Berberis</i>	Barberry	Sunjoy Todo®	Low hedge	4	Full sun	Y		Y	1.5-2'	Yellow	Spring	Sterile
<i>Cornus stolonifera</i>	Red Twig Dogwood	Arctic Fire®	Low hedge/Winter interest	2	Full-part sun			Y	3-5'	None	N/A	Red twigs in winter
<i>Cornus stolonifera</i>	Yellow Twig Dogwood	Arctic Sun®	Low hedge/Winter interest	4	Full-part sun			Y	3-4'	None	N/A	Yellow twigs in winter
<i>Weigela</i>	Weigela	Sonic Bloom®	Specimen	4	Full sun	Y	Y	Y	4-5'	Various	Spring-summer	
<i>Cornus alternifolia</i>	Pagoda Dogwood	Golden Shadows®	Specimen	3	Part sun			Y	10-12'	White	Spring	Variegated foliage



Think:

- Specimens
- Groupings
- Color
- Scent
- Sizes, shapes
- Hardiness
- Invasiveness



Make a plan

Make a plan



Purchase a plan

PW
PROVEN
WINNERS™

COLOR CHOICE
FLOWERING SHRUBS

DESIGN CHALLENGE

Colorful, Easy-Care Backyard Border

Summer is the time to relax on the patio and enjoy the results of your spring efforts. With an easy-care planting like this, allow yourself to sit down and admire the colorful flowers and visiting butterflies with no guilt because there won't be much to do!

The flower show starts in late spring, with white ninebark blooms and clusters of red-pink spirea flowers. Soon after, you'll start seeing potentilla's sweet little white daisy shapes, hydrangea's big pompoms, smokebush's frothy plumes and weigela's pink flowers along stems of this cultivar's variegated foliage. Eventually the perennial white coneflowers and magenta butterfly bush wands will join the show.

Although the blooms are the main attraction throughout the summer, this design's foliage colors and structure make it something special through the entire year. Watch for color changes on newly emerging foliage from the spirea and smokebush in spring, and in fall, you'll love the rich tones of the spirea and little bluestem. In winter, even though the foliage will have dropped from the deciduous shrubs, they'll retain their structure and form, and the evergreen arborvitae will hold its color year round. Be sure to leave the hydrangea and coneflower blooms on the plants after they fade for winter interest and to feed birds.

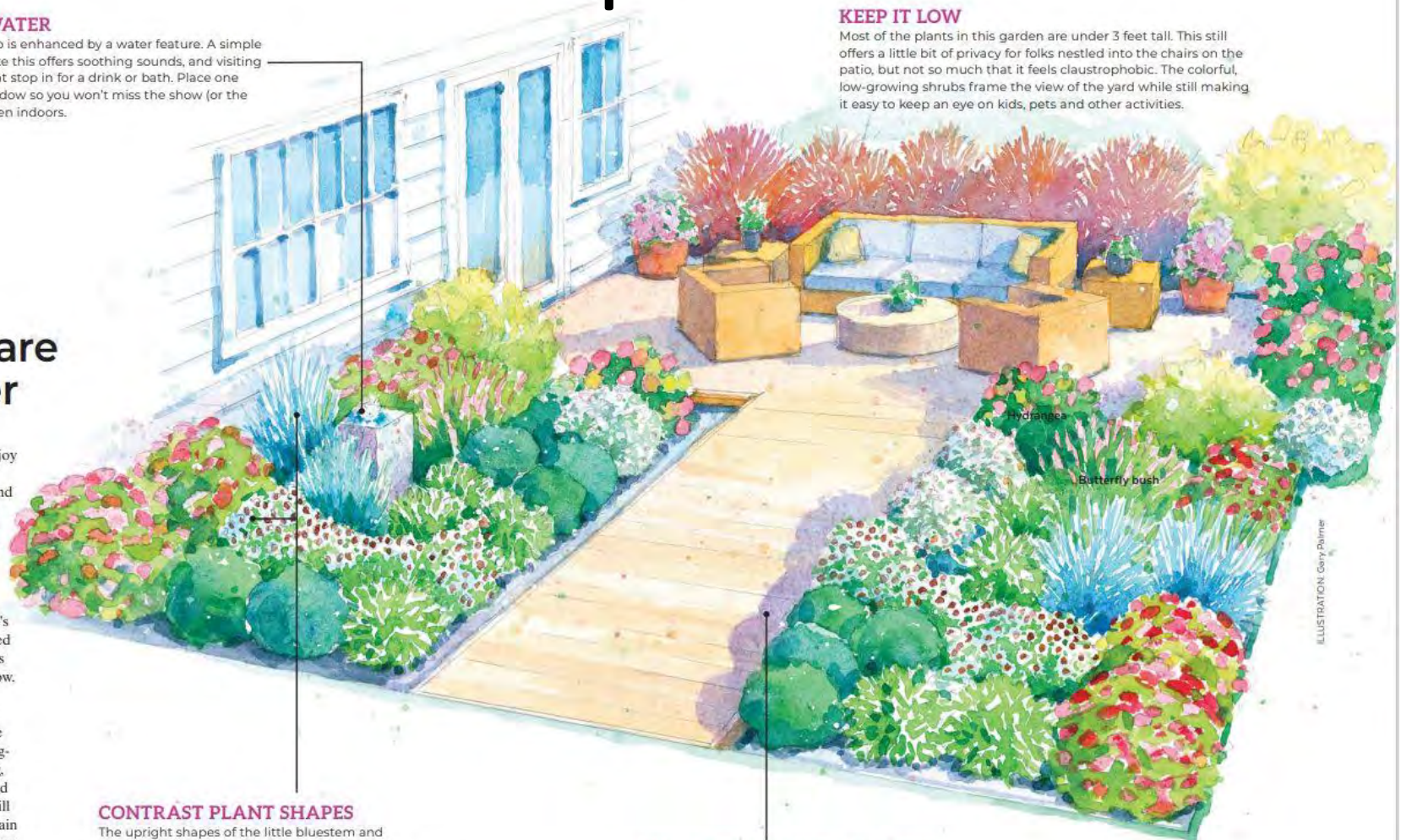
See some of the other benefits of this design at right. Then turn the page to see the complete planting plan and get a closer look at the plants and how to grow them.

ADD WATER

Every patio is enhanced by a water feature. A simple bubbler like this offers soothing sounds, and visiting birds might stop in for a drink or bath. Place one near a window so you won't miss the show (or the sound), even indoors.

KEEP IT LOW

Most of the plants in this garden are under 3 feet tall. This still offers a little bit of privacy for folks nestled into the chairs on the patio, but not so much that it feels claustrophobic. The colorful, low-growing shrubs frame the view of the yard while still making it easy to keep an eye on kids, pets and other activities.



CONTRAST PLANT SHAPES

The upright shapes of the little bluestem and coneflower punctuate the mounding forms of many of the shrubs. Butterfly bush's cone-shaped blooms arch out and create mini fireworks displays amongst the other round shapes.

WALK THROUGH THE GARDEN

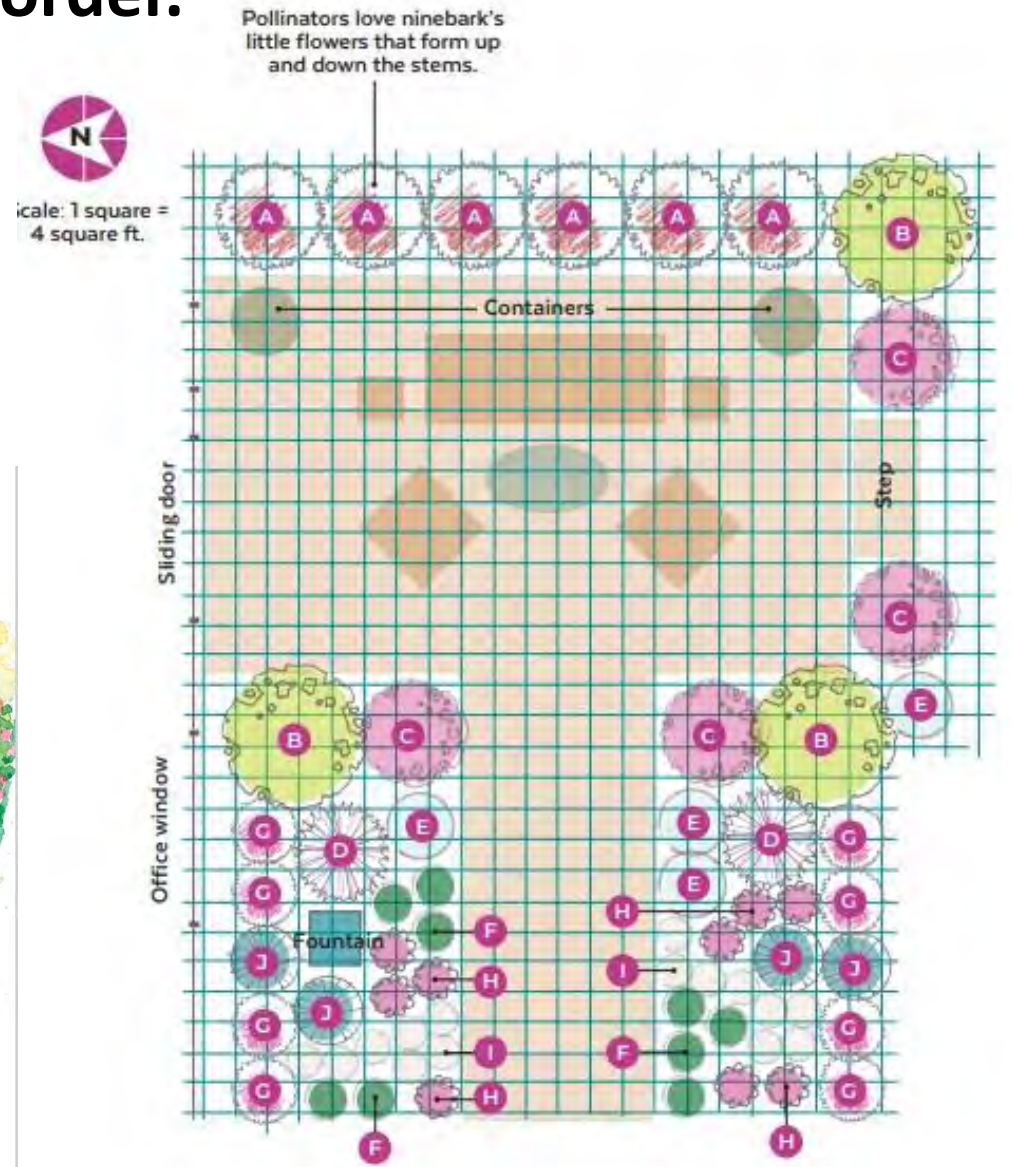
You could just plant a border around your patio. But adding a path through a deeper planting allows you to experience the garden up close instead of just viewing it from the patio or lawn. When you're standing in the middle of a planting, you're more likely to bend down and smell the honey scent of the butterfly bushes or snip a few hydrangea blooms for a bouquet.

ILLUSTRATION: Cary Palmer

store.gardengatemagazine.com/collections/plans

Colorful, easy care backyard border.

- Full color drawing
- Overhead plan to scale
- Description
- To-do lists
- Plant care
- Plant lists
- Mature size!



Honey, I Shrunk the Shrubs!



PW
PROVEN
WINNERS®

COLOR CHOICE
FLOWERING SHRUBS

Back Border



Tiny Wine® Ninebark
 Height/width 3-4'
 Late-spring flowers
 Native
 USDA zone 3-7



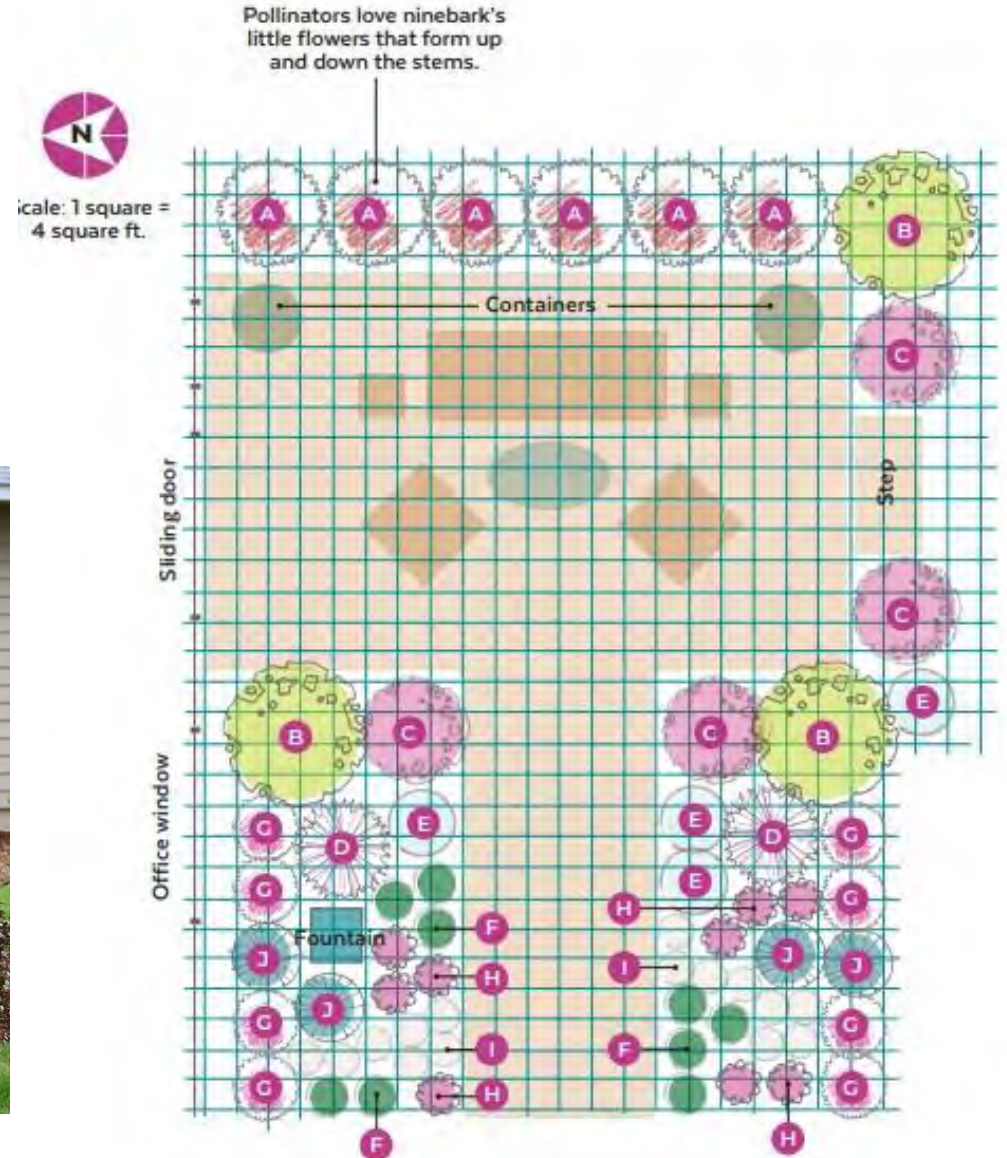
PW
 PROVEN
 WINNERS®

Full sun

COLOR CHOICE
 FLOWERING SHRUBS



Summer Wine® *Physocarpus*
 5-8' tall/wide



Alternatives:



KODIAK® Black *Diervilla*
3-4' tall/wide
USDA zone 4-7
Native species
Shade tolerant



KODIAK® Orange *Diervilla*
3-4' tall/wide
USDA zone 4-7
Native species
Shade tolerant



KODIAK® Red *Diervilla*
3-4' tall/wide
USDA zone 4-7
Native species
Shade tolerant



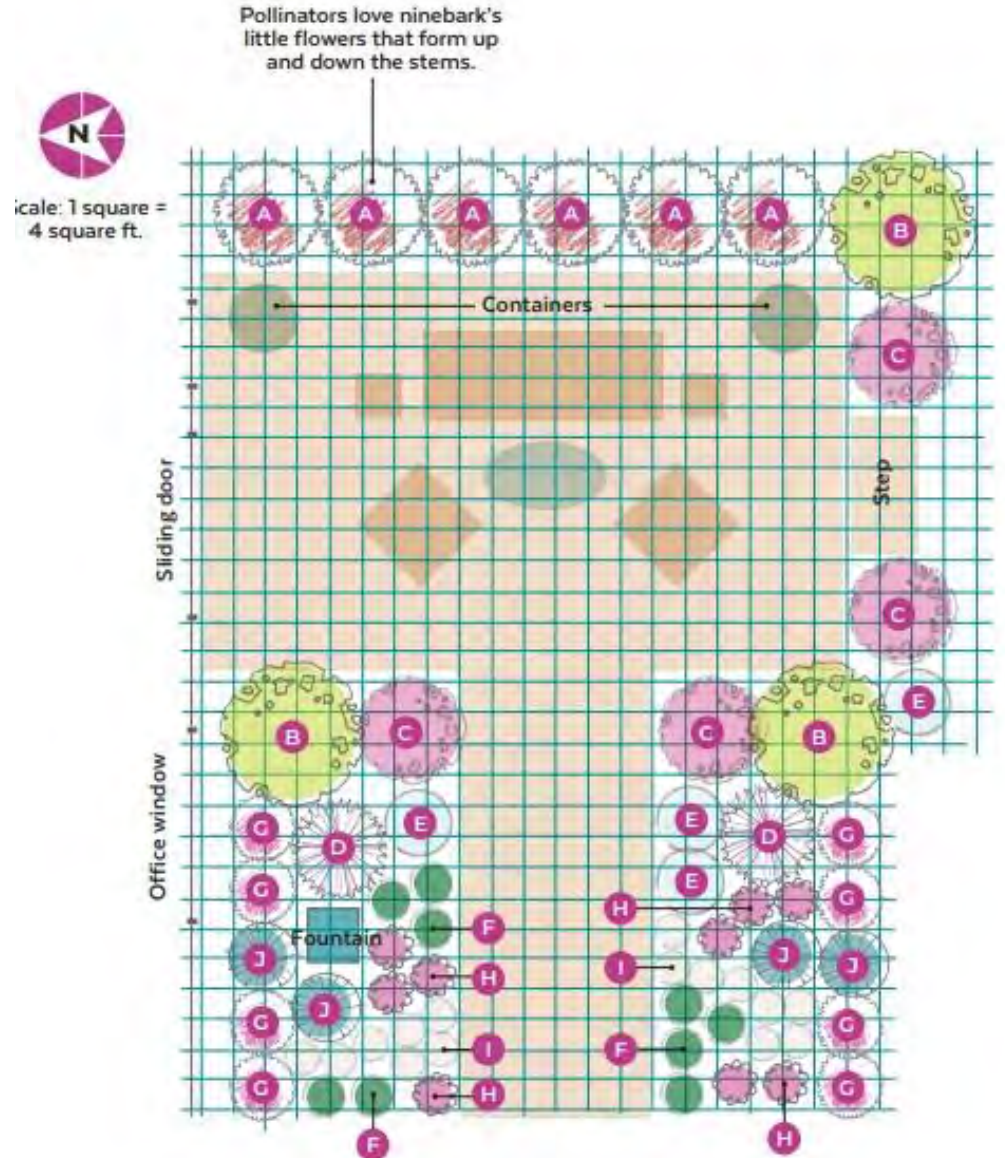
Specimen plants:



Winecraft Gold® Smokebush
 Height 4-6', width 4'
 Full sun
 USDA zone 5-8



'Golden Spirit' *Cotinus*
 8-15' Tall/wide



Alternatives:



WINECRAFT BLACK®
Cotinus/Smokebush
4-6' tall/wide
USDA zone 4-8
Deer resistant

GOLDEN TICKET®
Ligustrum/Privet
4-6' tall/wide
Full/part sun
USDA zone 5-9



- Non-invasive
- Pollinator, fragrant
- Drought tolerant
- Deer resistant

DESIGN CHALLENGE

Colorful, Easy-Care Backyard Border

Summer is the time to relax on the patio and enjoy the results of your spring efforts. With an easy-care planting like this, allow yourself to sit down and admire the colorful flowers and visiting butterflies with no guilt because there won't be much to do!

The flower show starts in late spring, with white ninebark blooms and clusters of red-pink spirea flowers. Soon after, you'll start seeing potentilla's sweet little white daisy shapes, hydrangea's big pompoms, smokebush's frothy plumes and weigela's pink flowers along stems of this cultivar's variegated foliage. Eventually the perennial white coneflowers and magenta butterfly bush wands will join the show.

Although the blooms are the main attraction throughout the summer, this design's foliage colors and structure make it something special through the entire year. Watch for color changes on newly emerging foliage from the spirea and smokebush in spring, and in fall, you'll love the rich tones of the spirea and little bluestem. In winter, even though the foliage will have dropped from the deciduous shrubs, they'll retain their structure and form, and the evergreen arborvitae will hold its color year round. Be sure to leave the hydrangea and coneflower blooms on the plants after they fade for winter interest and to feed birds.

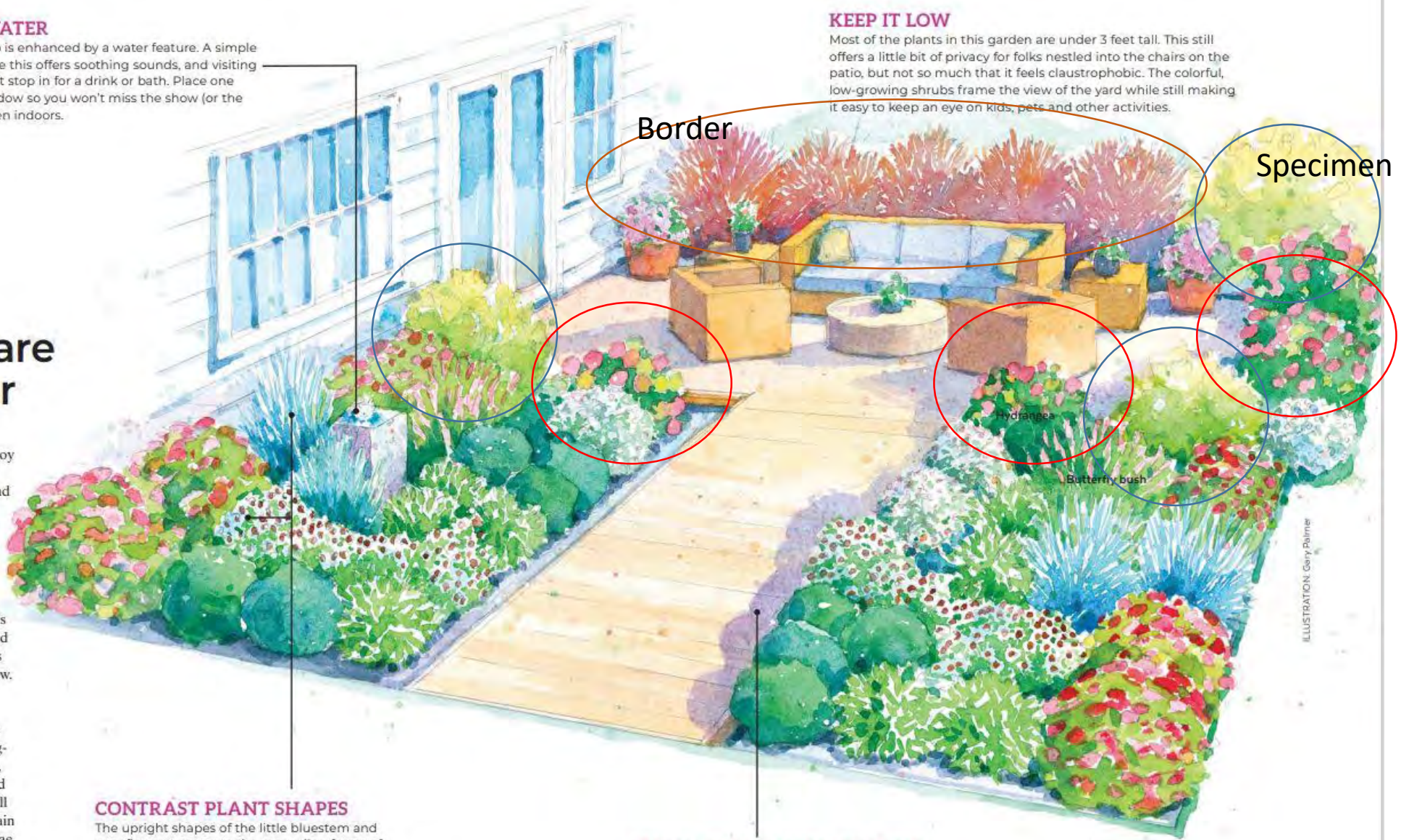
See some of the other benefits of this design at right. Then turn the page to see the complete planting plan and get a closer look at the plants and how to grow them.

ADD WATER

Every patio is enhanced by a water feature. A simple bubbler like this offers soothing sounds, and visiting birds might stop in for a drink or bath. Place one near a window so you won't miss the show (or the sound), even indoors.

KEEP IT LOW

Most of the plants in this garden are under 3 feet tall. This still offers a little bit of privacy for folks nestled into the chairs on the patio, but not so much that it feels claustrophobic. The colorful, low-growing shrubs frame the view of the yard while still making it easy to keep an eye on kids, pets and other activities.



CONTRAST PLANT SHAPES

The upright shapes of the little bluestem and coneflower punctuate the mounding forms of many of the shrubs. Butterfly bush's cone-shaped blooms arch out and create mini fireworks displays amongst the other round shapes.

WALK THROUGH THE GARDEN

You could just plant a border around your patio. But adding a path through a deeper planting allows you to experience the garden up close instead of just viewing it from the patio or lawn. When you're standing in the middle of a planting, you're more likely to bend down and smell the honey scent of the butterfly bushes or snip a few hydrangea blooms for a bouquet.

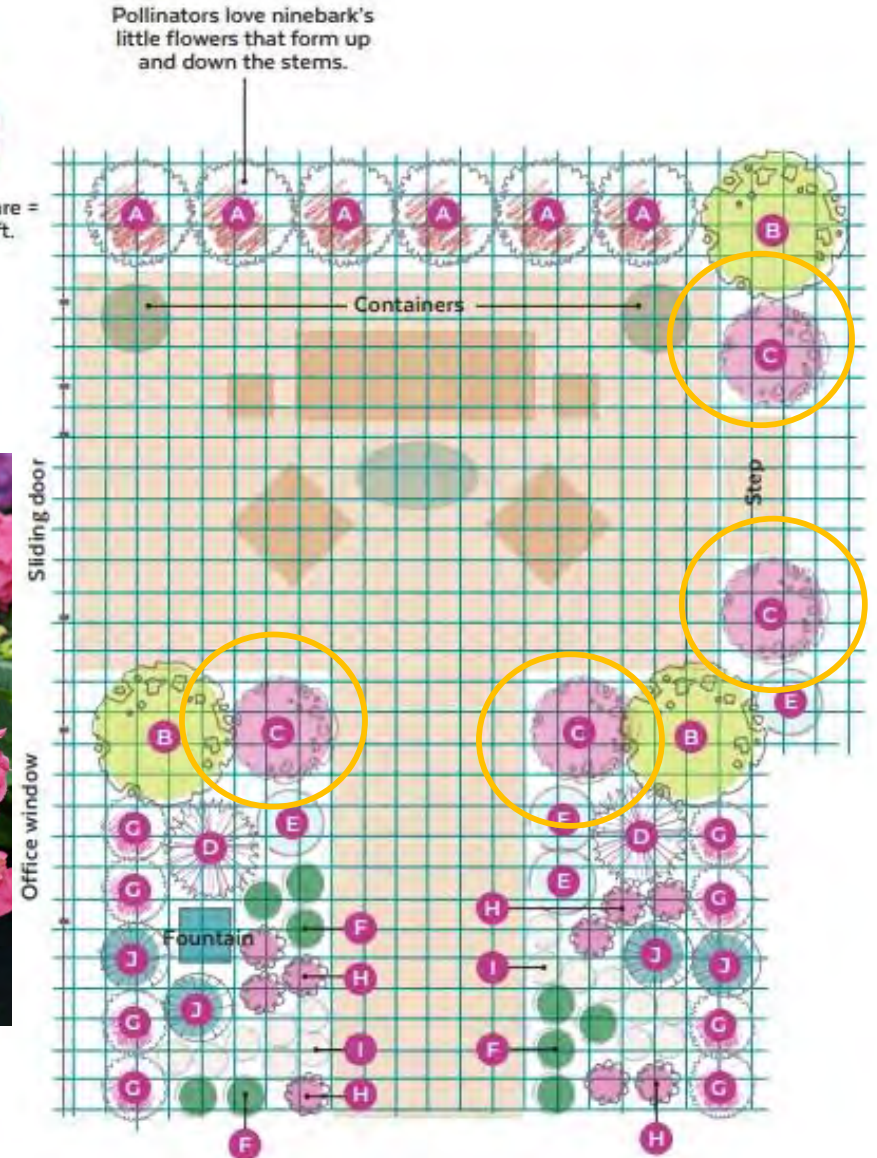
ILLUSTRATION: Gary Palmer

Flower display:



Let's Dance Big Band®
Bigleaf hydrangea

- Reblooming
- Full/part sun
- USDA zone 5-9
- 2.5' tall/wide
- Cut flowers



Alternative:

Let's Dance ¡Arriba!®

Hybrid hydrangea



- Reblooming
- Full/part sun
- USDA zone 4-9
- 2-3' tall/wide
- Cut flowers



PW
PROVEN
WINNERS®

COLOR CHOICE
FLOWERING SHRUBS

Another alternative!

Fire Light Tidbit®

Panicle hydrangea

- Dwarf, 2-3' tall/wide
- Full sun
- USDA zone 3-8
- Cut flowers



PW
PROVEN
WINNERS®

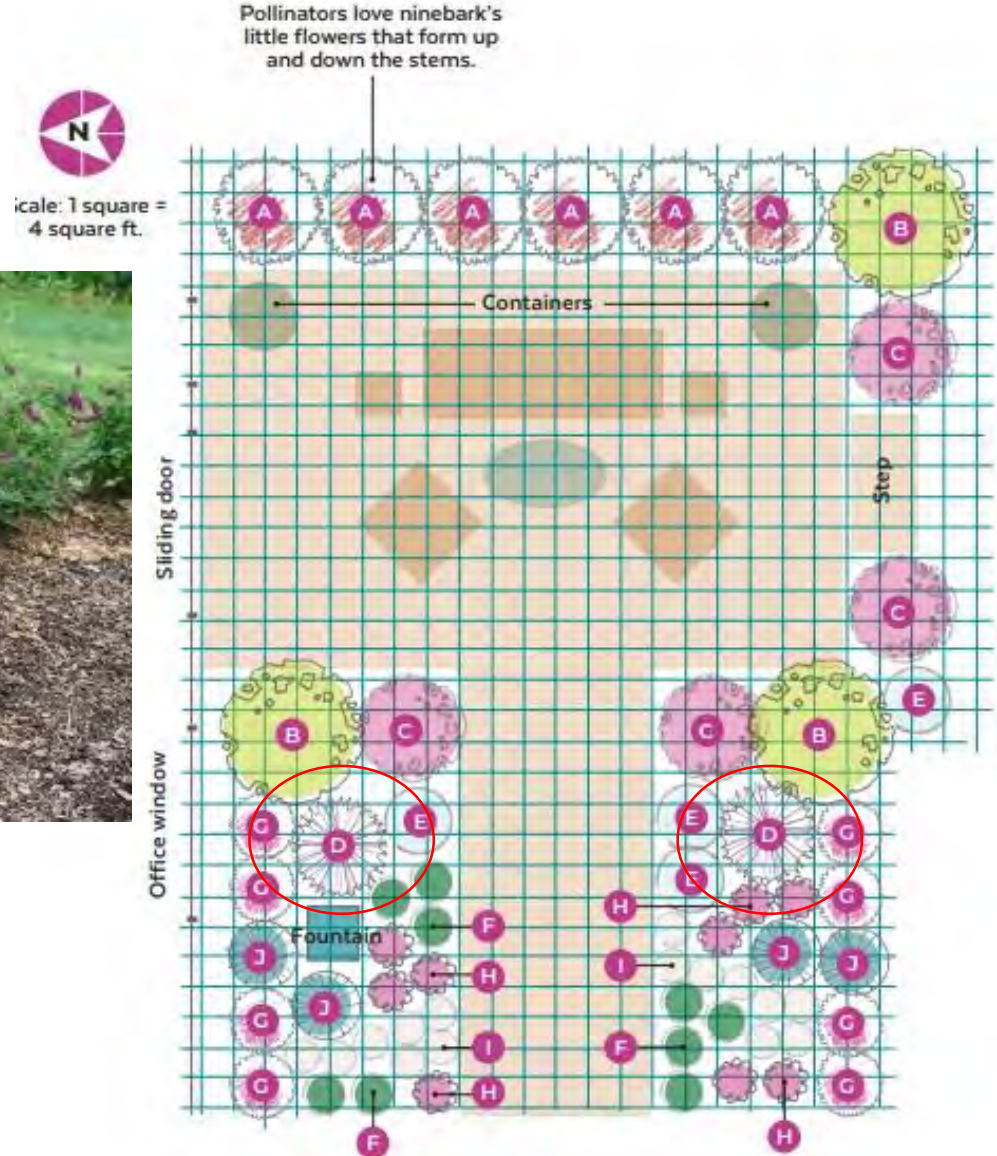
COLOR CHOICE
FLOWERING SHRUBS

Fragrant pollinator:



Lo & Behold Ruby Chip®

- Bright flowers
- Dwarf habit
- Fragrant
- Non invasive



Fragrant pollinator:



Lo & Behold Ruby Chip®
Butterfly bush

USDA Zone 5 - 9
Height/width 2.5'

PW
PROVEN
WINNERS®

COLOR CHOICE
FLOWERING SHRUBS



Alternative:

Fizzy Mizzy® Sweetspire

- Native cultivar
- Summer bloom
- Fragrant pollinator
- Colorful fall foliage
- Deer resistant
- Full sun/shade
- USDA zone 5-9
- 2-3' tall/wide



PW
PROVEN
WINNERS®

COLOR CHOICE
FLOWERING SHRUBS

ADD WATER

Every patio is enhanced by a water feature. A simple bubbler like this offers soothing sounds, and visiting birds might stop in for a drink or bath. Place one near a window so you won't miss the show (or the sound), even indoors.

KEEP IT LOW

Most of the plants in this garden are under 3 feet tall. This still offers a little bit of privacy for folks nestled into the chairs on the patio, but not so much that it feels claustrophobic. The colorful, low-growing shrubs frame the view of the yard while still making it easy to keep an eye on kids, pets and other activities.

DESIGN CHALLENGE

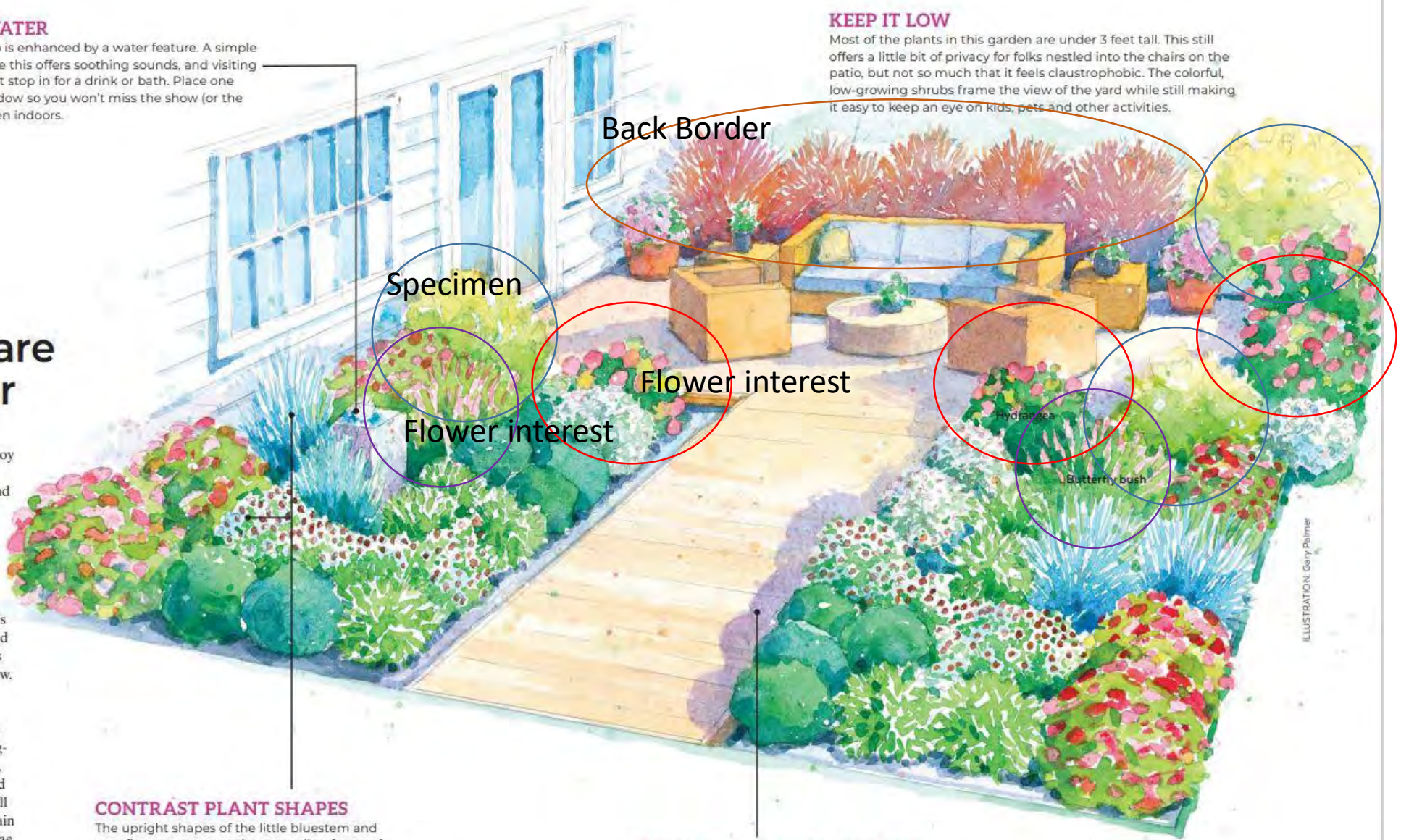
Colorful, Easy-Care Backyard Border

Summer is the time to relax on the patio and enjoy the results of your spring efforts. With an easy-care planting like this, allow yourself to sit down and admire the colorful flowers and visiting butterflies with no guilt because there won't be much to do!

The flower show starts in late spring, with white ninebark blooms and clusters of red-pink spirea flowers. Soon after, you'll start seeing potentilla's sweet little white daisy shapes, hydrangea's big pompoms, smokebush's frothy plumes and weigela's pink flowers along stems of this cultivar's variegated foliage. Eventually the perennial white coneflowers and magenta butterfly bush wands will join the show.

Although the blooms are the main attraction throughout the summer, this design's foliage colors and structure make it something special through the entire year. Watch for color changes on newly emerging foliage from the spirea and smokebush in spring, and in fall, you'll love the rich tones of the spirea and little bluestem. In winter, even though the foliage will have dropped from the deciduous shrubs, they'll retain their structure and form, and the evergreen arborvitae will hold its color year round. Be sure to leave the hydrangea and coneflower blooms on the plants after they fade for winter interest and to feed birds.

See some of the other benefits of this design at right. Then turn the page to see the complete planting plan and get a closer look at the plants and how to grow them.



Specimen

Back Border

Flower interest

Flower interest

Hydrangea

Butterfly bush

CONTRAST PLANT SHAPES

The upright shapes of the little bluestem and coneflower punctuate the mounding forms of many of the shrubs. Butterfly bush's cone-shaped blooms arch out and create mini fireworks displays amongst the other round shapes.

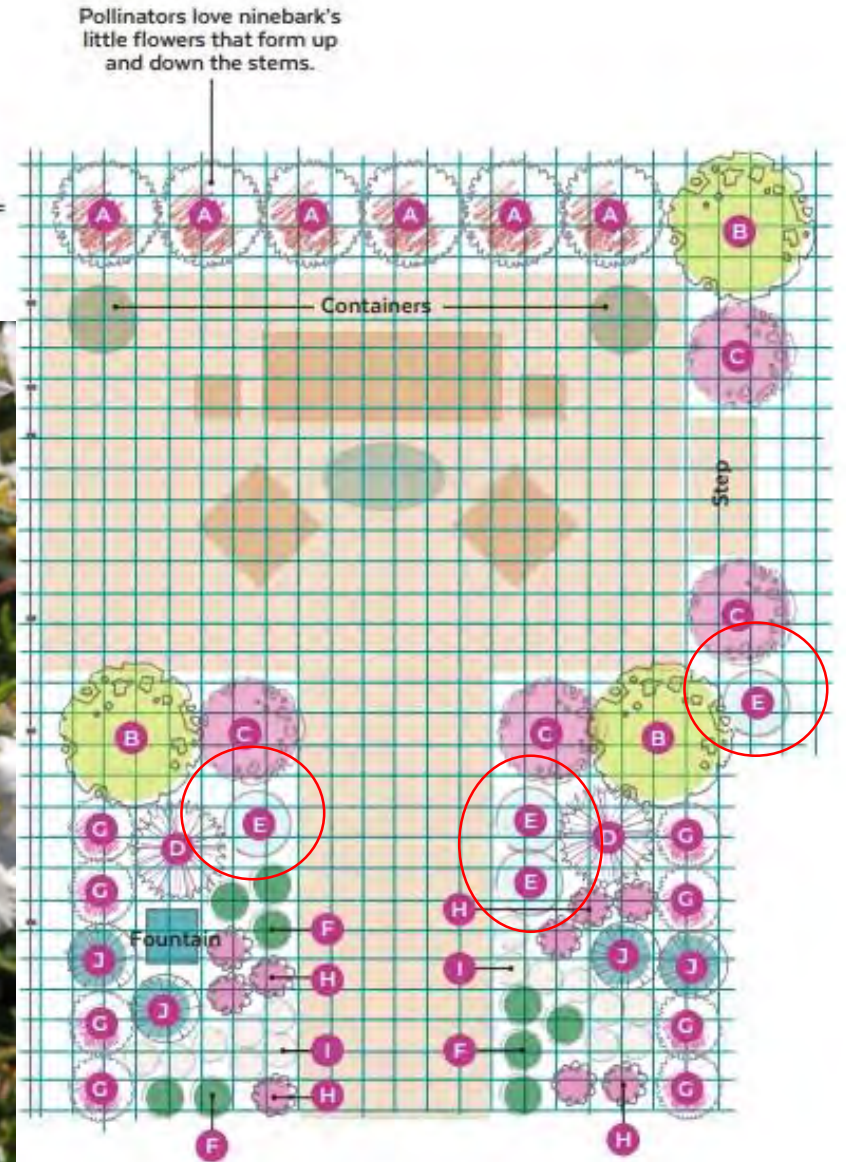
WALK THROUGH THE GARDEN

You could just plant a border around your patio. But adding a path through a deeper planting allows you to experience the garden up close instead of just viewing it from the patio or lawn. When you're standing in the middle of a planting, you're more likely to bend down and smell the honey scent of the butterfly bushes or snip a few hydrangea blooms for a bouquet.

Contrasting size and shapes:



2-3' T/W
USDA 2-7



Happy Face® White

Potentilla

- Native species
- Long blooming
- Deer resistant
- Delicate, dusty green foliage
- Flowers from head to toe



Alternative:



Reminiscent™ Crema

Rose

- Fragrant, large blooms
- Self-cleaning
- Full sun
- USDA zone 4-9
- 1.5-3' tall/wide



PW
PROVEN
WINNERS®

COLOR CHOICE
FLOWERING SHRUBS



REMINISCENT™

Rosa

REMINISCENT™ Coral

REMINISCENT™ Crema

REMINISCENT™ Pink

- Traditional blooms with modern performance
- Fragrant
- Bred in Serbia



PW
PROVEN
WINNERS®

COLOR CHOICE
FLOWERING SHRUBS



2-3.5' tall and 2' wide
USDA zone 4-9



REMINISCENT™ *Coral Rosa*

PW
PROVEN
WINNERS®

COLOR CHOICE
FLOWERING SHRUBS

3-4' tall and 2' wide
USDA zone 4-9



REMINISCENT™ *Pink Rosa*

PW
PROVEN
WINNERS®

COLOR CHOICE
FLOWERING SHRUBS

NEW!

DESIGN CHALLENGE

Colorful, Easy-Care Backyard Border

Summer is the time to relax on the patio and enjoy the results of your spring efforts. With an easy-care planting like this, allow yourself to sit down and admire the colorful flowers and visiting butterflies with no guilt because there won't be much to do!

The flower show starts in late spring, with white ninebark blooms and clusters of red-pink spirea flowers. Soon after, you'll start seeing potentilla's sweet little white daisy shapes, hydrangea's big pompoms, smokebush's frothy plumes and weigela's pink flowers along stems of this cultivar's variegated foliage. Eventually the perennial white coneflowers and magenta butterfly bush wands will join the show.

Although the blooms are the main attraction throughout the summer, this design's foliage colors and structure make it something special through the entire year. Watch for color changes on newly emerging foliage from the spirea and smokebush in spring, and in fall, you'll love the rich tones of the spirea and little bluestem. In winter, even though the foliage will have dropped from the deciduous shrubs, they'll retain their structure and form, and the evergreen arborvitae will hold its color year round. Be sure to leave the hydrangea and coneflower blooms on the plants after they fade for winter interest and to feed birds.

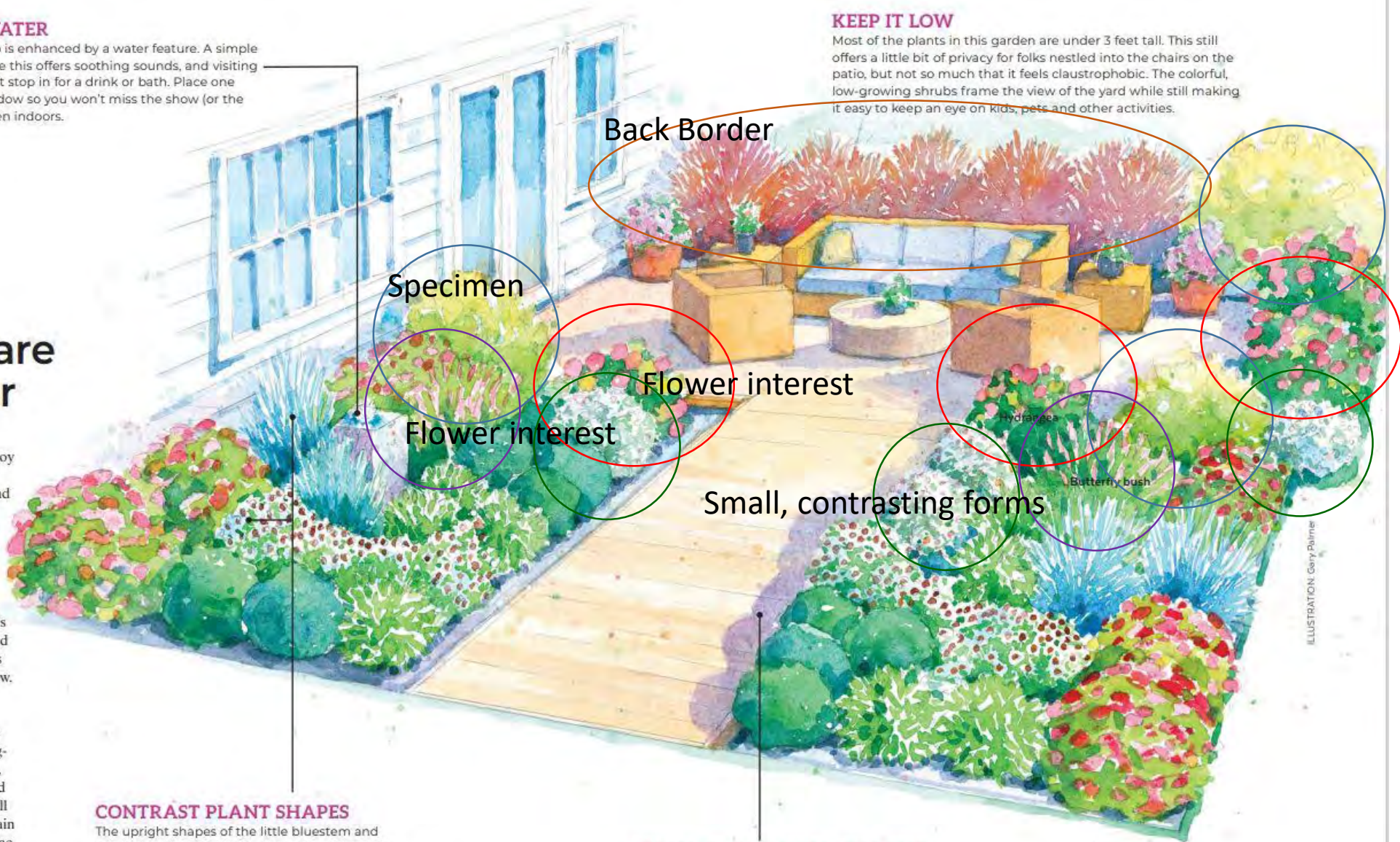
See some of the other benefits of this design at right. Then turn the page to see the complete planting plan and get a closer look at the plants and how to grow them.

ADD WATER

Every patio is enhanced by a water feature. A simple bubbler like this offers soothing sounds, and visiting birds might stop in for a drink or bath. Place one near a window so you won't miss the show (or the sound), even indoors.

KEEP IT LOW

Most of the plants in this garden are under 3 feet tall. This still offers a little bit of privacy for folks nestled into the chairs on the patio, but not so much that it feels claustrophobic. The colorful, low-growing shrubs frame the view of the yard while still making it easy to keep an eye on kids, pets and other activities.



CONTRAST PLANT SHAPES

The upright shapes of the little bluestem and coneflower punctuate the mounding forms of many of the shrubs. Butterfly bush's cone-shaped blooms arch out and create mini fireworks displays amongst the other round shapes.

WALK THROUGH THE GARDEN

You could just plant a border around your patio. But adding a path through a deeper planting allows you to experience the garden up close instead of just viewing it from the patio or lawn. When you're standing in the middle of a planting, you're more likely to bend down and smell the honey scent of the butterfly bushes or snip a few hydrangea blooms for a bouquet.

ILLUSTRATION: Gary Palmer

Evergreens:



1-2' T/W
USDA 3-8



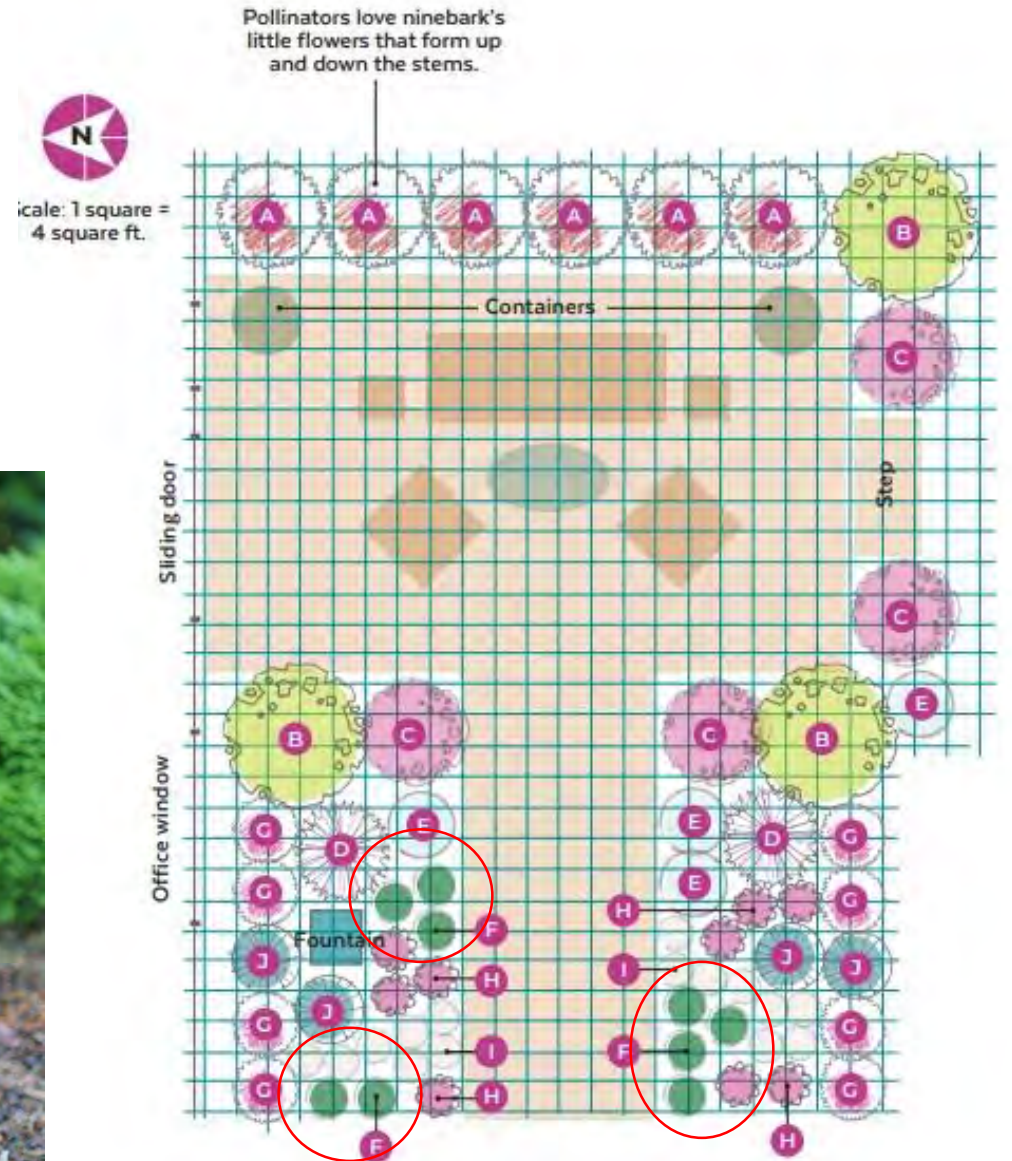
Tater Tot®

Thuja occidentalis

- Native species
- Dwarf
- Salt tolerant
- Bright green foliage
- Dense, round shape

PW
PROVEN
WINNERS®

COLOR CHOICE
FLOWERING SHRUBS



Alternative:



Anna's Magic Ball®

Thuja occidentalis

- Native
- Dwarf species
- Salt tolerant
- Chartreuse foliage
- Dense, round shape

Full sun/part shade
USDA zone 3-7
10-15" tall/wide



PW
PROVEN
WINNERS®

COLOR CHOICE
FLOWERING SHRUBS

DESIGN CHALLENGE

Colorful, Easy-Care Backyard Border

Summer is the time to relax on the patio and enjoy the results of your spring efforts. With an easy-care planting like this, allow yourself to sit down and admire the colorful flowers and visiting butterflies with no guilt because there won't be much to do!

The flower show starts in late spring, with white ninebark blooms and clusters of red-pink spirea flowers. Soon after, you'll start seeing potentilla's sweet little white daisy shapes, hydrangea's big pompoms, smokebush's frothy plumes and weigela's pink flowers along stems of this cultivar's variegated foliage. Eventually the perennial white coneflowers and magenta butterfly bush wands will join the show.

Although the blooms are the main attraction throughout the summer, this design's foliage colors and structure make it something special through the entire year. Watch for color changes on newly emerging foliage from the spirea and smokebush in spring, and in fall, you'll love the rich tones of the spirea and little bluestem. In winter, even though the foliage will have dropped from the deciduous shrubs, they'll retain their structure and form, and the evergreen arborvitae will hold its color year round. Be sure to leave the hydrangea and coneflower blooms on the plants after they fade for winter interest and to feed birds.

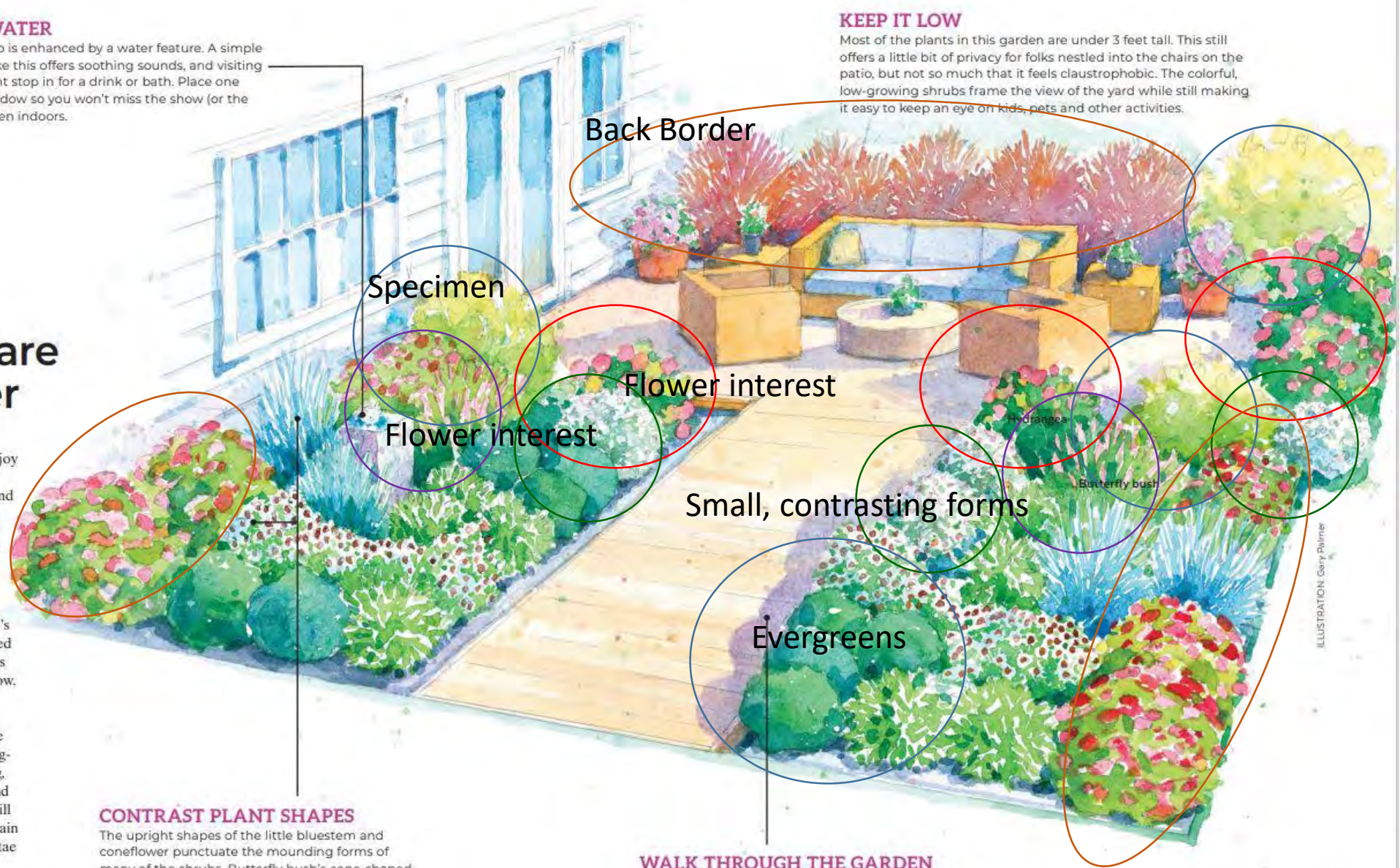
See some of the other benefits of this design at right. Then turn the page to see the complete planting plan and get a closer look at the plants and how to grow them.

ADD WATER

Every patio is enhanced by a water feature. A simple bubbler like this offers soothing sounds, and visiting birds might stop in for a drink or bath. Place one near a window so you won't miss the show (or the sound), even indoors.

KEEP IT LOW

Most of the plants in this garden are under 3 feet tall. This still offers a little bit of privacy for folks nestled into the chairs on the patio, but not so much that it feels claustrophobic. The colorful, low-growing shrubs frame the view of the yard while still making it easy to keep an eye on kids, pets and other activities.



CONTRAST PLANT SHAPES

The upright shapes of the little bluestem and coneflower punctuate the mounding forms of many of the shrubs. Butterfly bush's cone-shaped blooms arch out and create mini fireworks displays amongst the other round shapes.

WALK THROUGH THE GARDEN

You could just plant a border around your patio. But adding a path through a deeper planting allows you to experience the garden up close instead of just viewing it from the patio or lawn. When you're standing in the middle of a planting, you're more likely to bend down and smell the honey scent of the butterfly bushes or snip a few hydrangea blooms for a bouquet.

Bold color stories



Double Play Doozie®

Spiraea

2-3' tall/wide

USDA Zones 3-8



PW
PROVEN
WINNERS®

COLOR CHOICE
FLOWERING SHRUBS

Smaller and bolder



Double Play[®] Candy Corn[®]

Spiraea

1.5-2.5' tall/wide

USDA Zones 4-8



PW
PROVEN
WINNERS[®]

COLOR CHOICE[®]
FLOWERING SHRUBS

ADD WATER

Every patio is enhanced by a water feature. A simple bubbler like this offers soothing sounds, and visiting birds might stop in for a drink or bath. Place one near a window so you won't miss the show (or the sound), even indoors.

KEEP IT LOW

Most of the plants in this garden are under 3 feet tall. This still offers a little bit of privacy for folks nestled into the chairs on the patio, but not so much that it feels claustrophobic. The colorful, low-growing shrubs frame the view of the yard while still making it easy to keep an eye on kids, pets and other activities.

DESIGN CHALLENGE

Colorful, Easy-Care Backyard Border

Summer is the time to relax on the patio and enjoy the results of your spring efforts. With an easy-care planting like this, allow yourself to sit down and admire the colorful flowers and visiting butterflies with no guilt because there won't be much to do!

The flower show starts in late spring, with white ninebark blooms and clusters of red-pink spirea flowers. Soon after, you'll start seeing potentilla's sweet little white daisy shapes, hydrangea's big pompoms, smokebush's frothy plumes and weigela's pink flowers along stems of this cultivar's variegated foliage. Eventually the perennial white coneflowers and magenta butterfly bush wands will join the show.

Although the blooms are the main attraction throughout the summer, this design's foliage colors and structure make it something special through the entire year. Watch for color changes on newly emerging foliage from the spirea and smokebush in spring, and in fall, you'll love the rich tones of the spirea and little bluestem. In winter, even though the foliage will have dropped from the deciduous shrubs, they'll retain their structure and form, and the evergreen arborvitae will hold its color year round. Be sure to leave the hydrangea and coneflower blooms on the plants after they fade for winter interest and to feed birds.

See some of the other benefits of this design at right. Then turn the page to see the complete planting plan and get a closer look at the plants and how to grow them.

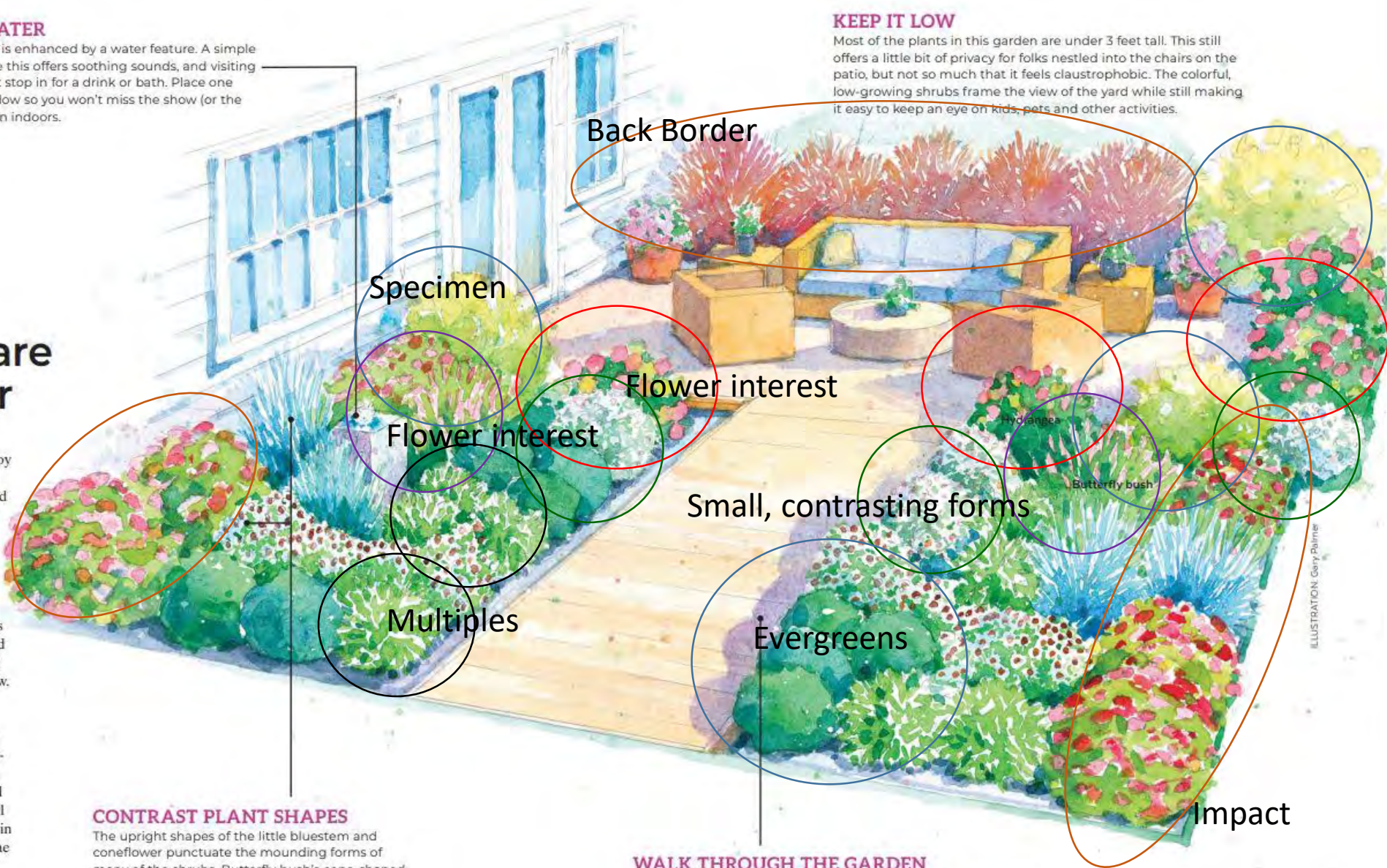


ILLUSTRATION: Gary Palmer

CONTRAST PLANT SHAPES

The upright shapes of the little bluestem and coneflower punctuate the mounding forms of many of the shrubs. Butterfly bush's cone-shaped blooms arch out and create mini fireworks displays amongst the other round shapes.

WALK THROUGH THE GARDEN

You could just plant a border around your patio. But adding a path through a deeper planting allows you to experience the garden up close instead of just viewing it from the patio or lawn. When you're standing in the middle of a planting, you're more likely to bend down and smell the honey scent of the butterfly bushes or snip a few hydrangea blooms for a bouquet.



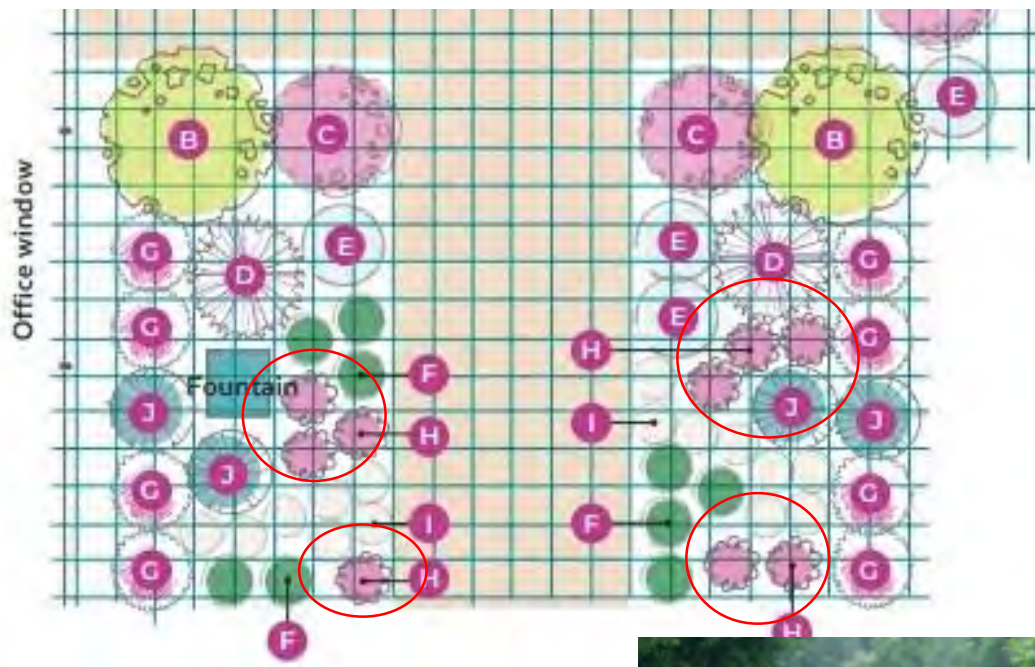
My Monet Purple Effect

Weigela

- Dwarf, 1.5-2.5' tall/wide
- Strong Flowering, late-spring
- Colorful foliage
- Deer resistant



Multiples



Sonic Bloom® Pink

Weigela

4-5' tall/wide

USDA Zones 4-8

PW
PROVEN
WINNERS®

COLOR CHOICE
FLOWERING SHRUBS

Alternative

NEW!



Midnight Sun®

Weigela

- Dwarf – 1-1.5' tall/wide
- Deer resistant
- Colorful foliage – think coleus!



PW
PROVEN
WINNERS®

COLOR CHOICE
FLOWERING SHRUBS

DESIGN CHALLENGE

Colorful, Easy-Care Backyard Border

Summer is the time to relax on the patio and enjoy the results of your spring efforts. With an easy-care planting like this, allow yourself to sit down and admire the colorful flowers and visiting butterflies with no guilt because there won't be much to do!

The flower show starts in late spring, with white ninebark blooms and clusters of red-pink spirea flowers. Soon after, you'll start seeing potentilla's sweet little white daisy shapes, hydrangea's big pompoms, smokebush's frothy plumes and weigela's pink flowers along stems of this cultivar's variegated foliage. Eventually the perennial white coneflowers and magenta butterfly bush wands will join the show.

Although the blooms are the main attraction throughout the summer, this design's foliage colors and structure make it something special through the entire year. Watch for color changes on newly emerging foliage from the spirea and smokebush in spring, and in fall, you'll love the rich tones of the spirea and little bluestem. In winter, even though the foliage will have dropped from the deciduous shrubs, they'll retain their structure and form, and the evergreen arborvitae will hold its color year round. Be sure to leave the hydrangea and coneflower blooms on the plants after they fade for winter interest and to feed birds.

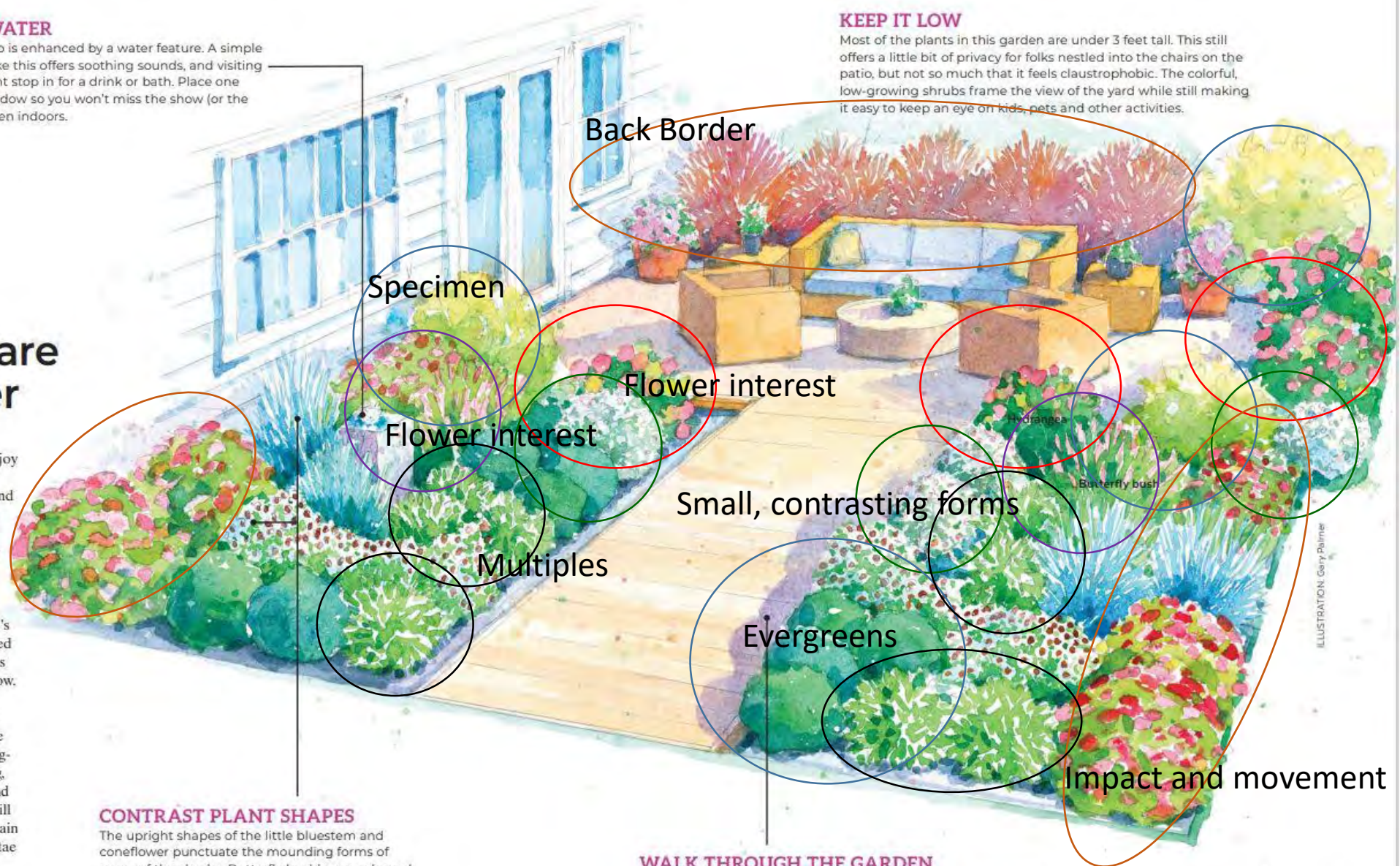
See some of the other benefits of this design at right. Then turn the page to see the complete planting plan and get a closer look at the plants and how to grow them.

ADD WATER

Every patio is enhanced by a water feature. A simple bubbler like this offers soothing sounds, and visiting birds might stop in for a drink or bath. Place one near a window so you won't miss the show (or the sound), even indoors.

KEEP IT LOW

Most of the plants in this garden are under 3 feet tall. This still offers a little bit of privacy for folks nestled into the chairs on the patio, but not so much that it feels claustrophobic. The colorful, low-growing shrubs frame the view of the yard while still making it easy to keep an eye on kids, pets and other activities.



CONTRAST PLANT SHAPES

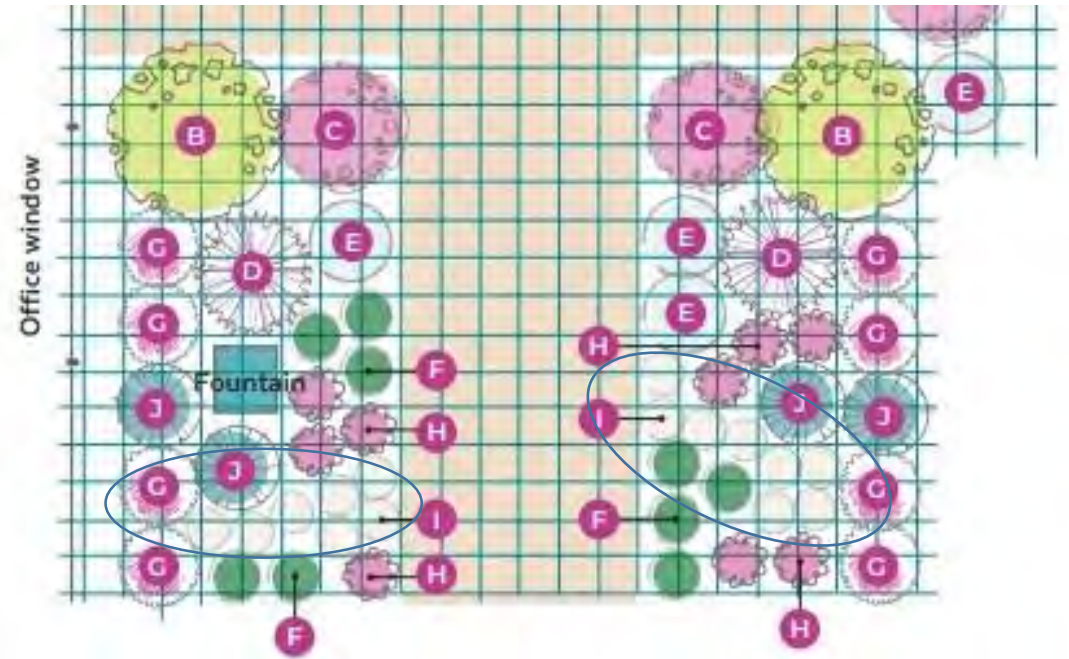
The upright shapes of the little bluestem and coneflower punctuate the mounding forms of many of the shrubs. Butterfly bush's cone-shaped blooms arch out and create mini fireworks displays amongst the other round shapes.

WALK THROUGH THE GARDEN

You could just plant a border around your patio. But adding a path through a deeper planting allows you to experience the garden up close instead of just viewing it from the patio or lawn. When you're standing in the middle of a planting, you're more likely to bend down and smell the honey scent of the butterfly bushes or snip a few hydrangea blooms for a bouquet.

ILLUSTRATION: Gery Palmer

Drifts of perennials



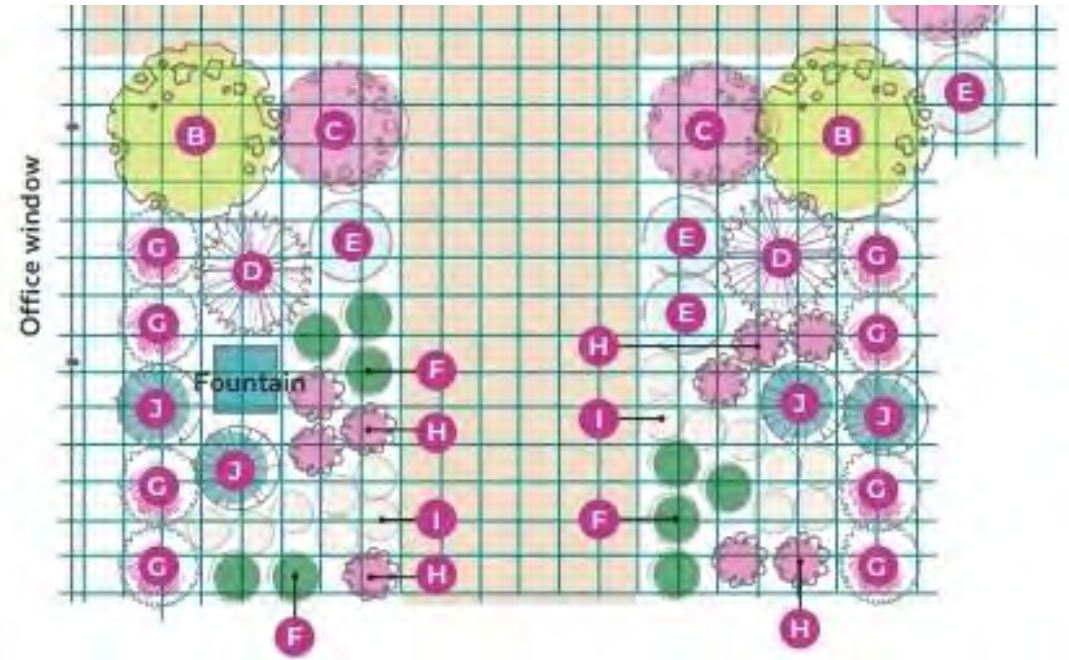
PowWow White®

Echinacea

- Height 16-20"
- Width 12-18"
- Fragrant, deer resistant
- USDA 4-9



Drifts of perennials



Color Coded® The Price is White®

Echinacea

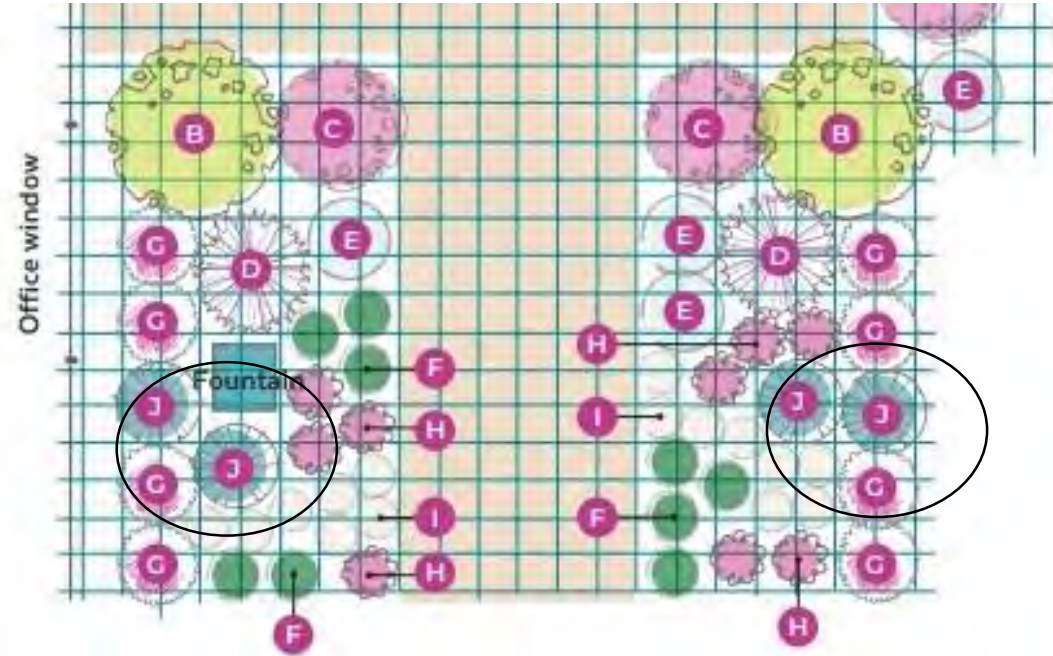
- Height 20-22"
- Width 16-18"
- Fragrant, deer resistant

NEW!

PW
PROVEN
WINNERS®

COLOR CHOICE
FLOWERING SHRUBS

Grasses



Prairie Winds® 'Blue Paradise'

Schizachyrium scoparium
(Little Bluestem)

Native species

- Height 16-20"
- Width 12-18"
- Deer resistant, drought tolerant
- USDA 4-9

PW
PROVEN
WINNERS®

COLOR CHOICE
FLOWERING SHRUBS

PW
PROVEN
WINNERS®

COLOR CHOICE
FLOWERING SHRUBS

DESIGN CHALLENGE

Colorful, Easy-Care Backyard Border

Summer is the time to relax on the patio and enjoy the results of your spring efforts. With an easy-care planting like this, allow yourself to sit down and admire the colorful flowers and visiting butterflies with no guilt because there won't be much to do!

The flower show starts in late spring, with white ninebark blooms and clusters of red-pink spirea flowers. Soon after, you'll start seeing potentilla's sweet little white daisy shapes, hydrangea's big pompoms, smokebush's frothy plumes and weigela's pink flowers along stems of this cultivar's variegated foliage. Eventually the perennial white coneflowers and magenta butterfly bush wands will join the show.

Although the blooms are the main attraction throughout the summer, this design's foliage colors and structure make it something special through the entire year. Watch for color changes on newly emerging foliage from the spirea and smokebush in spring, and in fall, you'll love the rich tones of the spirea and little bluestem. In winter, even though the foliage will have dropped from the deciduous shrubs, they'll retain their structure and form, and the evergreen arborvitae will hold its color year round. Be sure to leave the hydrangea and coneflower blooms on the plants after they fade for winter interest and to feed birds.

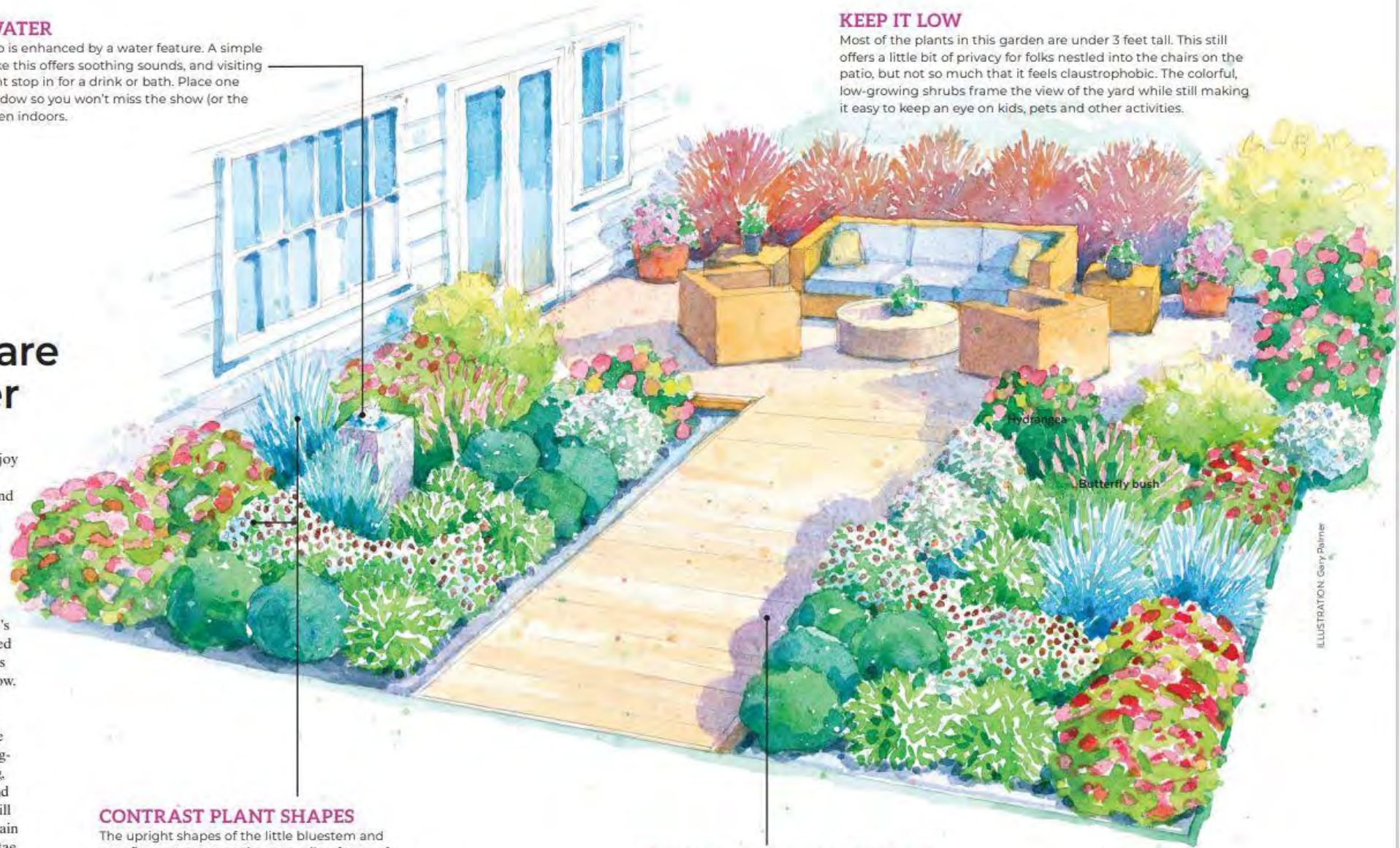
See some of the other benefits of this design at right. Then turn the page to see the complete planting plan and get a closer look at the plants and how to grow them.

ADD WATER

Every patio is enhanced by a water feature. A simple bubbler like this offers soothing sounds, and visiting birds might stop in for a drink or bath. Place one near a window so you won't miss the show (or the sound), even indoors.

KEEP IT LOW

Most of the plants in this garden are under 3 feet tall. This still offers a little bit of privacy for folks nestled into the chairs on the patio, but not so much that it feels claustrophobic. The colorful, low-growing shrubs frame the view of the yard while still making it easy to keep an eye on kids, pets and other activities.



CONTRAST PLANT SHAPES

The upright shapes of the little bluestem and coneflower punctuate the mounding forms of many of the shrubs. Butterfly bush's cone-shaped blooms arch out and create mini fireworks displays amongst the other round shapes.

WALK THROUGH THE GARDEN

You could just plant a border around your patio. But adding a path through a deeper planting allows you to experience the garden up close instead of just viewing it from the patio or lawn. When you're standing in the middle of a planting, you're more likely to bend down and smell the honey scent of the butterfly bushes or snip a few hydrangea blooms for a bouquet.

ILLUSTRATION: Gerry Palmer



Make a list



New plant list:

Botanical name	Common Name	Plant Name (Cultivar)	Use	Zone	Sun	Pollinator?	Reblooming?	Bloom time	Flower color	Foliage color	Winter interest?	Deer resistant?	Size
<i>Physocarpus</i>	Ninebark	Tiny Wine	Screening	4-7	Full	Yes	No	Late Spring	white	dark purple/copper		No	3-5'
<i>Cotinus</i>	Smokebush	Winecraft Gold	Large specimen	5-8	Full/part	No	No	Summer	green/pink	light green/yellow		Yes	4-6'
<i>Hydrangea macrophylla</i>	Bigleaf hydrangea	Let's Dance Big Band	Flowering	5-9	Full/part	No	Yes	Summer	Pink to Purple	Green	Yes	No	2.5'
<i>Buddleia</i>	Butterfly Bush	Lo & Behold Ruby Chip	Flowering	5-9	Full	Yes	Yes	Summer	Pink	Green		Yes	2.5'
<i>Potentilla</i>	Bush cinquefoil	Happy Face White	Flowering	2-7	Full/part	Yes	Yes	Late spring-frost	White	Bule-green		Yes	2-3'
<i>Thuja occidentalis</i>	Arborvitae	Tater Tot	Border	3-8	Full/part	No	No	Evergreen		Green	Yes	No	1-2'
<i>Spiraea</i>	Spirea	Double Play Doozie	Border	3-8	Full/part	Yes	Yes	Late-spring-fall	Red	Green, red, orange		Yes	2-3'
<i>Weigela</i>	Weigela	My Monet Purple Effect	Groupings	4-6	Full/part	Yes	No	Late spring	Pink	Green, white		Yes	1.5-2.5'
<i>Echinacea</i>	Coneflower	PowWow White	Groupings	4-9	Full	Yes	Yes	Mid-late summer	White	Green	Yes	Somewhat	16-20"
<i>Schizachyrium</i>	Little Bluestem	Blue Paradise	Grasses	3-9	Full	No	No	None		Blue, red	Yes	Yes	3.5'

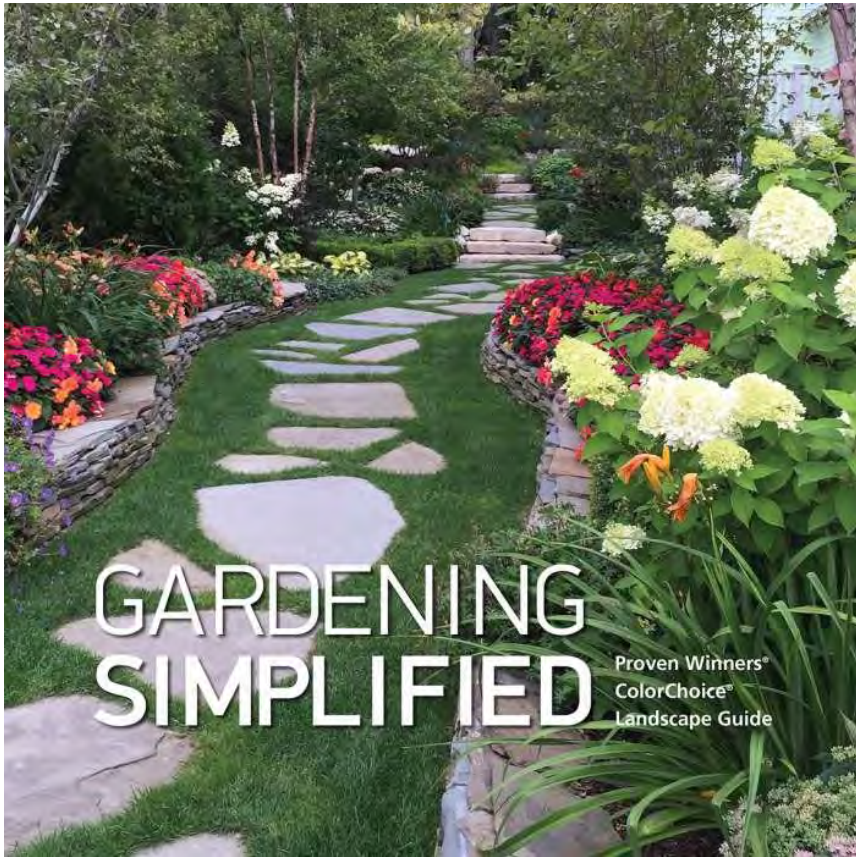
Shade list:

Botanical name	Common Name	Plant Name (Cultivar)	Use	Zone	Shade	Pollinator?	Reblooming?	Bloom time	Flower color	Foliage color	Winter interest?	Deer resistant?	Size
<i>Diervilla</i>	Bush honeysuckle	Kodiak Black	Screening	4-7	Full/part	Yes	No	Summer	Yellow	Black		Yes	3-4'
<i>Hydrangea quercifolia</i>	Oakleaf hydrangea	Gatsby Gal	Large specimen	5-9	Part	Yes	No	Summer	White/Pink	Green/copper	Yes (fall)		5-6'
<i>Hydrangea arborescens</i>	Smooth hydrangea	Invincibelle Garnetta	Flowering	3-8	Part	Yes	Yes	Summer	Pink/green	Green	Yes	No	2.5'
<i>Itea</i>	Summersweet	Fizzy Mizzy	Flowering	5-9	Full/part	Yes	No	Summer	White	Green, red		Yes	2.5'
<i>Potentilla</i>	Bush cinquefoil	Happy Face Yellow	Flowering	2-7	Part	Yes	Yes	Late spring-frost	Yellow	Bule-green		Yes	2-3'
<i>Buxus</i>	Boxwood	North Star	Border	5-9	Full/part	No	No	Evergreen		Green	Yes	Yes	2.5'
<i>Fothergilla</i>	Bottlebrush	Legend of the Small	Border	5-9	Part	Yes	No	Spring	White	Green, red, orange	Yes (fall)	Yes	2-2.5'
<i>Hosta</i>	Hosta	Shadowland Seducer	Low borders	3-9	Full	Yes	Yes	Spring/summer	Lavendar	Green, white			2' 2'
<i>Heuchera</i>	Coral Bells	Dolce Appletini	Groupings	4-9	Full	Yes	No	Spring	Red	Chartreuse			10"
<i>Deschampsia cespitosa</i>	Tufted Hair Grass	Gold Dew	Grasses	4-8	Part			Summer	Gold	Green/wheat	Yes	Yes	2'



PW
PROVEN
WINNERS®

COLOR CHOICE®
FLOWERING SHRUBS



Gardening Simplified magazine:

- Zones
 - Size
 - Spacing
 - Sun exposure
 - Care is also on your diamond tags!
-
- Digital copy available at:
[www.provenwinners.com/professionals/
online-catalogs](http://www.provenwinners.com/professionals/online-catalogs)

store.gardengatemagazine.com/collections/plans

www.mypwcolorchoices.com/retailers



NATALIE CARMOLLI

Marketing/Public Relations

natalie@springmeadownursery.com

ProvenWinners-Shrubs.com